



■ TABLE OF CONTENTS

OVERVIEW Page 3
 WHAT'S IN IT Page 5
 USING THE SPADE Page 6
 CLEANSING MODE Page 8
 MASSAGING MODE Page 9
 CHARGING Page 10
 FEATURES Page 11
 CLEANING & STORING YOUR SPADE Page 11
 THINGS TO KNOW Page 12
 COMMON QUESTIONS Page 13
 SPADE 1 YEAR LIMITED WARRANTY Page 14
 DISPOSAL INFORMATION Page 15
 SPECIFICATIONS Page 15
 DISCLAIMER Page 16

■ OVERVIEW

PopSonic's new skincare system will invigorate your beauty regimen, leaving your skin looking smoother, cleaner, and younger.

With its Shovel-like shape, the SPADE is specifically designed with the contours of your face in mind.

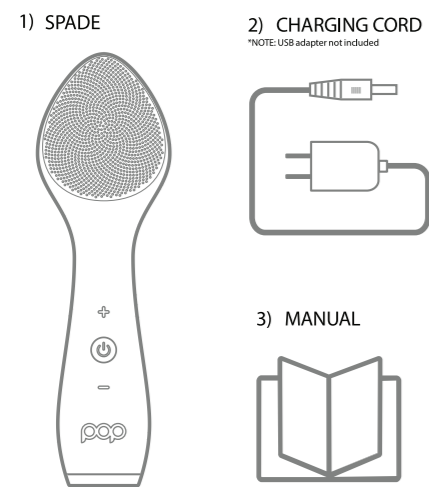
Use the SPADE as part of your daily cleansing routine. The SPADE's soft silicone bristles coupled with sonic vibrations provide a much deeper clean than washing by hand. When used in conjunction with your usual skin care products, the SPADE will help to infuse your product into the dermal layers past the skin's surface. With 4 "plus" speeds and 4 "minus" speeds, finding the most effective and comfortable setting for your various skin regimens is achievable.

Regular use of the SPADE will lay a foundation of lifelong younger, healthier looking skin.

■ Fig. 01



■ WHAT'S IN IT



■ USING THE SPADE

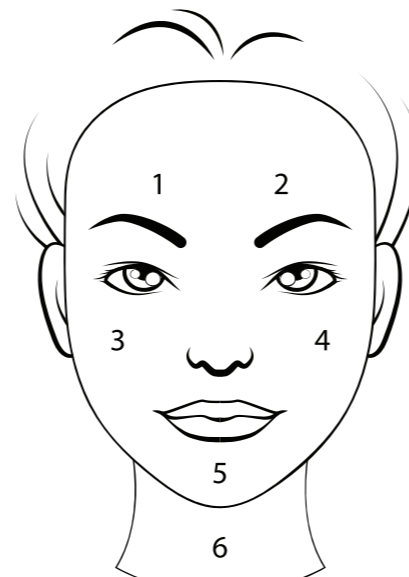
- 1) Press center button to turn on. When activated, the SPADE will be on the middle speed – speed 5.
- 2) Press the center button again and SPADE will turn off.

Below the ON/OFF button is the MASSAGING “-” button. If you press this button once, you will go from speed 5 to speed 4, which is a slightly slower vibration. If you press the button again, you will proceed to speed 3, which is a slower vibration still. Press the button again to go to speed 2, and so on down to speed 1. To progress back up in speeds, press the plus “+” button until you reach the speed you want.

Above the ON/OFF button is the CLEANSING “+” button. If you press this button once, you will go from speed 5 to speed 6, which is a slightly faster vibration. If you press the button again, you will proceed to speed 7, which is a faster vibration than 6. Press the button again to go to speed 8, and so on up to speed 9. To progress back down in speeds, press the minus “-” button until you reach the speed you want.

At any time you can press the ON/OFF button to turn the SPADE off. Then press the ON/OFF button again to start again in MEDIUM mode (speed 5).

■ Fig. 02



■ CLEANSING MODE

Using the front of the SPADE, the CLEANSING modes delivers sonic vibrations thru thousands of soft and rounded silicone bristles to help remove dirt, oil, and makeup residue from your pores. The SPADE is programmed to briefly pause every 20 seconds to remind you to move from one area of your face to another. After 2 minutes the SPADE will shut off automatically.

- 1) Dampen face and apply cleanser to bristles on the front of the Spade. If you prefer to apply your cleanser manually, proceed to step 2.
- 2) Turn on your SPADE and start cleansing around your forehead and brow areas (zones 1 and 2), then work your way down to your eyes, cheek, and nose (zones 3 and 4), then chin (zone 5) and neck (zone 6).

In each area, seen in Fig. 01, find the speed that is most comfortable. Around the eyes it may be a lower or middle speed while around the forehead and neck a higher speed may be most effective.

■ MASSAGING MODE

The thicker silicone waves on the backside of the SPADE are effective in diminishing the appearance of fine lines and wrinkles. Use this mode at any time with or without product for more youthful, healthy looking skin. Using anti-aging skin cream or serum is recommended but not required.

- 1) Press the ON/OFF button to start the SPADE. Using the backside of the SPADE start massaging the areas of your face or neck that you would like to firm up then find the speed that feels most comfortable for you.
- 2) Massage that area for 20 seconds until the SPADE indicates it is time to move to another area by pausing briefly. The SPADE will cycle thru 6 segments before turning off after 2 minutes. If you have not finished, simply turn the SPADE on by pressing the ON/OFF button once and finish your regimen. Turn off the SPADE by pressing the ON/OFF button again.

■ CHARGING

A fully charged SPADE will hold a charge for many weeks when used as directed, up to 100 uses. When you start to feel the power of the vibrations becoming weaker, it is time to charge your SPADE. Simply plug the USB side of the cord into a cell phone charger or other USB powered port and then plug the other side into the small perforated hole on the back side of the Spade. Once you do this the Spade's indicator light should be constant. Once the light off, this indicates your Spade is fully charged. remove the charging cord from the SPADE. Charging a SPADE will normally take about 1-2 hours.

■ Fig. 02



■ FEATURES

- 9 adjustable speeds
- Two minute timer with 20 second interval indicator
- Up to 10,000 vibrations per minute
- Built in rechargeable lithium ion battery
- Waterproof (IPX6)
- Anti-microbial silicone rubber exterior
- Up to 100 uses per charge

■ CLEANING & STORING YOUR SPADE

The better you take care of your SPADE, the longer life span it will have. Thoroughly clean the SPADE after every use by washing the surface with soap and water. Pat dry with a lint free cloth.

Never use products containing alcohol, petrol, or acetone to clean your SPADE.

Avoid using clay based, silicone based, or grainy cleaners, exfoliators or scrubs as they may damage the SPADE's soft silicone bristles.

■ THINGS TO KNOW

If you are going to share the Spade, make sure to thoroughly clean it before and after to prevent unhygienic occurrences.

Using the SPADE should be comfortable. If you experience any discomfort, discontinue use immediately and consult your doctor or dermatologist.

If you have a skin condition, consult your dermatologist before use. Use particular care around your eyes and avoid coming in contact with your eyelids and eyes themselves.

Do not allow children under 12 to use the SPADE without adult supervision.

Do not use the SPADE or any charging devices if they are damaged. When charging, make sure the SPADE and the charging cord are dry and that while charging, the SPADE is not near water. Coming in to contact with water while charging could cause irreparable damage to the SPADE.

■ COMMON QUESTIONS

- *Why doesn't the LED light come on when I plug in the charger?
 - The battery may already be fully charged
 - The battery may be drained and will require a few minutes before it starts charging
 - Check the charging cable and USB port to make sure they are functioning properly
- *Why doesn't the SPADE turn on when I press the ON/OFF button?
 - Battery is depleted, recharge your SPADE
- *The surface of the SPADE is eroding or degrading, why is this happening?
 - Most likely the SPADE has come in to contact with a substance that damages silicone. Please consult the SPADE and STORING YOUR SPADE section of this manual for how to prevent this from happening.
- *How can I get in touch with someone about my PopSonic SPADE?
 - Call our customer service center at (800)772-8174. If you do not reach a representative, leave a message and we will call you back promptly.
 - Email us directly at HELP@SHOPPOPSONIC.COM

■ SPADE 1 YEAR LIMITED WARRANTY

POP SONIC warrants the SPADE for a period of 1 years after the original date of purchase, against defects due to faulty workmanship or materials. If you notify POP SONIC of a defect with your device within this 1 year period, POP SONIC will, at its discretion, replace the device free of charge.

This warranty covers working parts. It does not cover damage due to normal usage or accidents such as dropping the device. Other exclusions include misuse or neglect to the device.

This warranty is void if any other charging cables besides the one you received is used with your device. For any warranty claims, proof of purchase must be provided. For this reason, please keep your receipt for the duration of the warranty period.

For warranty claims, you must register your device and log in to your account at www.shoppopsonic.com, then select the option to make a warranty claim. Our customer service department will then contact you to initiate the warranty procedure.

Shipping costs are non-refundable.

■ DISPOSAL INFORMATION

The crossed out trash bin on the bottom of the SPADE indicates that this device should not be treated as normal household waste but should be brought to the appropriate collection point for recycling of electronic equipment.

For more information on how to recycle or dispose of this item, please contact your state or local waste disposal service.

■ SPECIFICATIONS

Materials:	Anti-microbial silicone and ABS plastic
Weight:	114 grams
Battery:	Li-Ion 260 mAh 3.7v
Charging Time:	< 4 hours
Usage:	up to 100 uses
Standby:	90 days or more
Frequency:	125 hz
Max decibels:	68 dB

■ DISCLAIMER

Users of this device use it at their own risk. Neither POP SONIC nor it's retailers assume any responsibility or liability for any injuries or damages, physical or otherwise, resulting, directly or indirectly, from the use of this device.

