



JLAB
JBUDS
FRAMES

We love that you are rocking JLab!
We take pride in our products and fully stand behind them.



YOUR WARRANTY

All warranty claims are subject to JLab authorization and at our sole discretion. Retain your proof of purchase to ensure warranty coverage.



CONTACT US

Reach out to us at support@jlab.com or visit jlab.com/contact

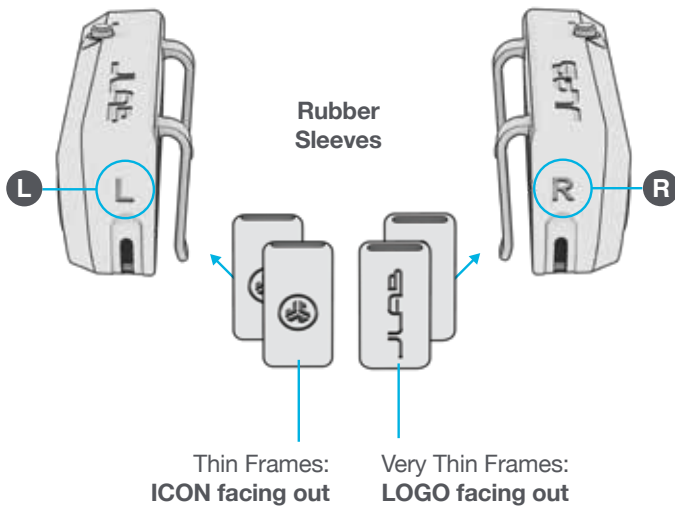
REGISTER TODAY

jlab.com/register

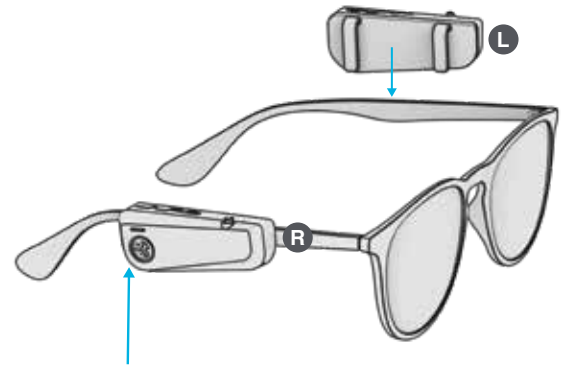
Product updates | How-to tips
FAQs & more

ASSEMBLY

- 1 Locate the **L & R** on the back. If needed, add the **Rubber Sleeves** on hooks for narrow stem glasses.



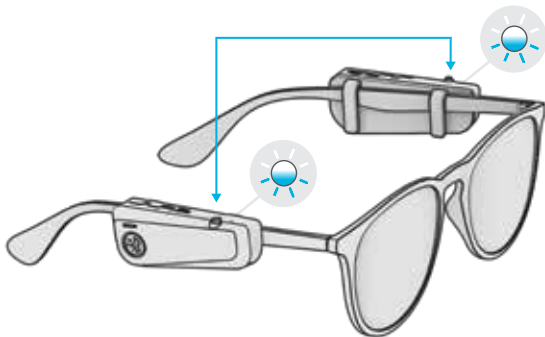
- 2 Slide the JBuds Frames on corresponding left and right stems of glasses.



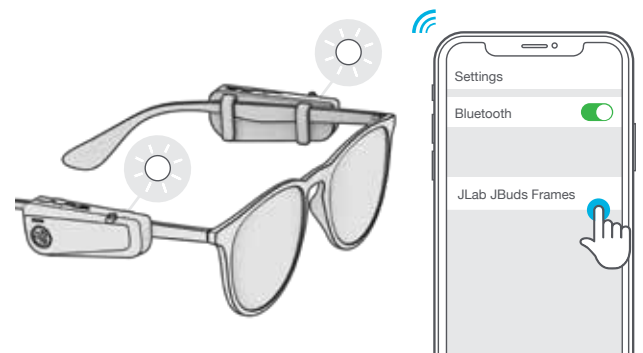
The JBuds Frames should be positioned closest to the ear for best performance.

CONNECTING BLUETOOTH

- 1 Press and hold **BOTH** buttons 5+ seconds. One side will start **blinking blue/white** indicating ready to connect.



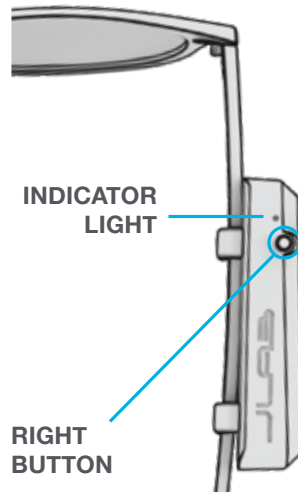
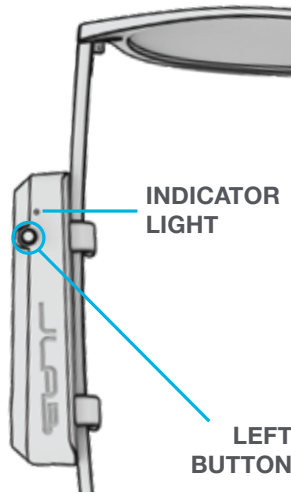
- 2 Enter your device settings and connect to "JLab JBuds Frames". **Solid white lights** will indicate you are connected.



ADDING NEW/ADDITIONAL BLUETOOTH DEVICES:

Turn OFF Bluetooth from any previously connected device. Turn ON Bluetooth from new device. Power ON the JBuds Frames and they will enter Bluetooth pairing after 10 seconds. Select "JLab JBuds Frames" in new device settings to connect.

BUTTON FUNCTIONS



VOLUME DOWN: Single press

SIRI (iOS) or "OK GOOGLE" (ANDROID):
Double press

TRACK BACKWARD: Press & hold 1+ sec

VOLUME UP: Single press

PLAY / PAUSE: Double press

TRACK FORWARD: Press & hold 1+ sec

ANSWER: Single press

HANGUP: Double press

REJECT INCOMING CALLS: Press & hold 1+ sec

EQ CHANGE: Triple press on either earbud (Cycles JLab Signature/Bass Boost)

POWER ON / OFF: Press & hold 3+ sec on either earbud (Button will power OFF both sides)

VOICE PROMPTS

"Hello": Power ON

"Earbuds joined":

Earbuds paired to each other

"Ready to Pair": JBuds Frames are ready to pair to Bluetooth device

"Bluetooth Connected":

Earbud is connected to device

"Battery Full": 100-80%

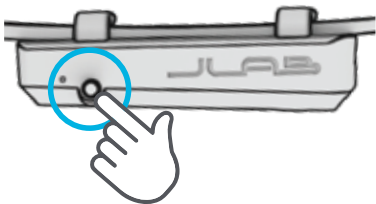
"Battery Medium": 80-20%

"Low Battery": Less than 20%
When power decreases to 10%,
"Low Battery" will play

"Goodbye": Power OFF

EQ SETTINGS

Triple press either the right or left earbud 3 times for different EQ settings.



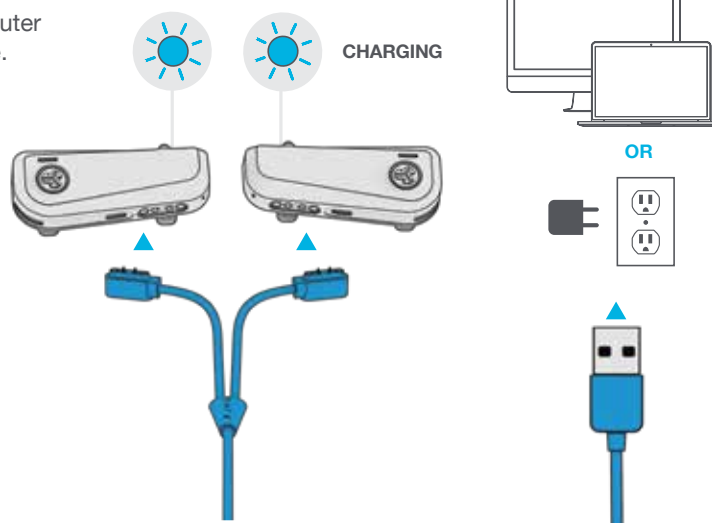
JLab SIGNATURE
JLab C3™ signature sound with amplified bass and vocals



BASS BOOST
Amplified bass and sub-bass

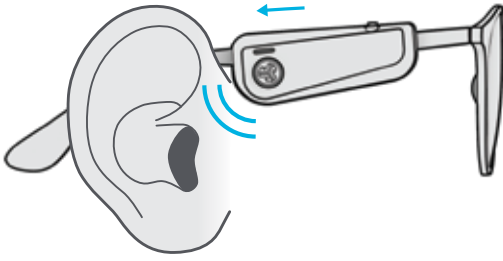
CHARGING

Connect the JBuds Frames to computer or USB 5V 1A (or less) output device.

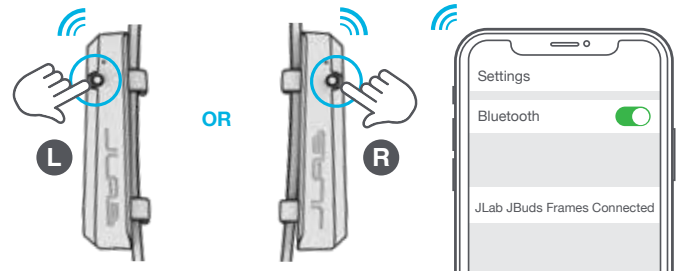


QUICK TIPS

Position the JBuds Frames as close to your ears as possible. This will greatly improve the audio performance.



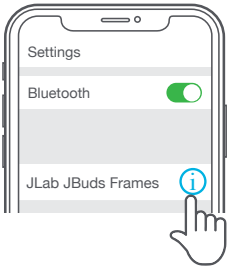
You can use either JBuds Frames left or right independently or both together with Dual Connect to listen to music or take calls. Note you will only have access to the left or right controls if you're using only one.



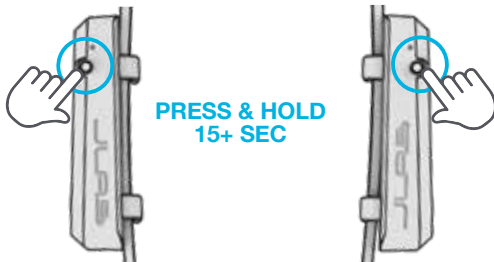
TROUBLESHOOTING

NO AUDIO IN ONE SIDE OR BLUETOOTH DOES NOT CONNECT/RECONNECT (MANUAL RESET)

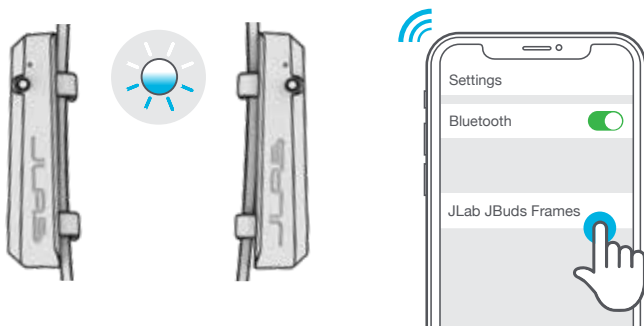
- 1 Enter your Bluetooth device settings and forget the JLab JBuds Frames.



- 2 When JBuds Frames are powered OFF, **Press and hold both buttons 15+ sec.** Frames will power ON then power OFF.



- 3 **Press and hold both buttons 3+ sec** to power ON. JBuds Frames will start blinking blue/white indicating ready to connect. Enter device settings and reconnect.



CAUTIONS

- Avoid extreme heat, cold, and humidity.
 - Avoid dropping or crushing the earbuds.
 - Wax may build up in the earbud tips, lowering the sound quality.
Carefully remove the wax with a cotton swab or other small tool to improve the sound quality.
 - If you experience discomfort or pain, try lowering the volume or discontinuing use temporarily.
 - If you experience regular discomfort while using this product, discontinue use and consult your physician.
 - We recommend you treat your earbuds as you would a nice pair of sunglasses and keep them in safe location when not in use.
-



[Shop products](#) | [Product alerts](#) | [Burn-in your headphones](#)

JLab Store + Burn-in Tool

