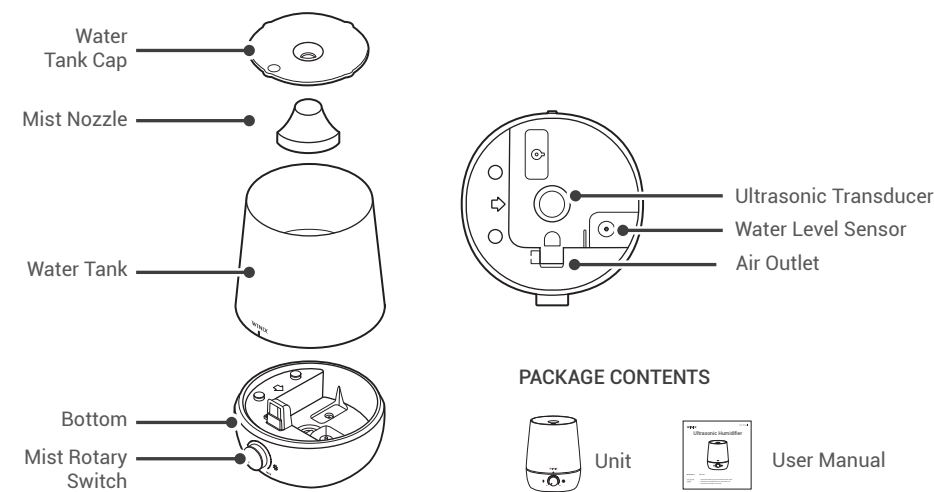
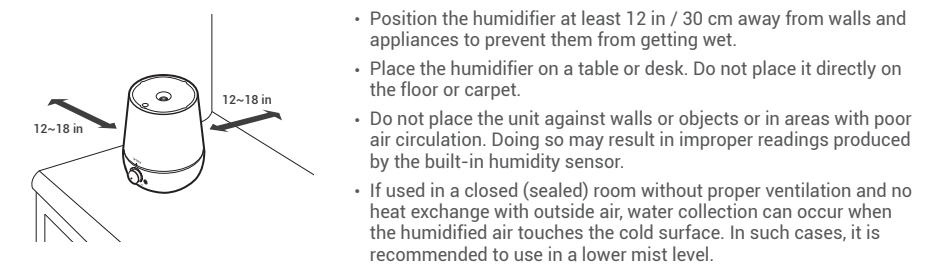


MODEL PART DIAGRAM



WHERE TO USE



- Position the humidifier at least 12 in / 30 cm away from walls and appliances to prevent them from getting wet.
- Place the humidifier on a table or desk. Do not place it directly on the floor or carpet.
- Do not place the unit against walls or objects or in areas with poor air circulation. Doing so may result in improper readings produced by the built-in humidity sensor.
- If used in a closed (sealed) room without proper ventilation and no heat exchange with outside air, water collection can occur when the humidified air touches the cold surface. In such cases, it is recommended to use in a lower mist level.

1

MAINTENANCE AND CLEANING

- Read all instructions before installation and use**
- Always place humidifier on a firm, flat surface. A waterproof mat or pad is recommended for under the humidifier. A finished floor may be damaged by water or moisture exposure.
 - Do not reach for a unit that has fallen into water. Unplug it immediately.
 - Always unplug the unit from the electrical outlet immediately after using and before cleaning.
 - Do not place or store the unit where it can fall or be pulled into a tub or sink.

- Wash the nozzle, cover separately, and let tank dry in the shade**
- Clean tank at least once or twice a week using clean water.
 - Naturally occurring stains inside the tank can be cleaned using a soft cloth.
 - Do not use chemicals such as bleach, abrasive, etc. to clean.

- Cleaning the ultrasonic transducer**
- Clean the ultrasonic module of the humidifier at least once or twice a week.
 - Tilt it in the direction of the air hinge when disposing of the water in the main body.
 - Do not allow water into this opening.
 - Never touch the transducer / ultrasonic membrane with your fingers; the natural oils in skin can damage the surface.
 - Never clean the ultrasonic membrane by scraping with a hard object. Scratching the surface of the vibrator with a sharp object may cause the Mist Output to weaken or cause failure.
 - Never submerge the base in water or any other liquid.



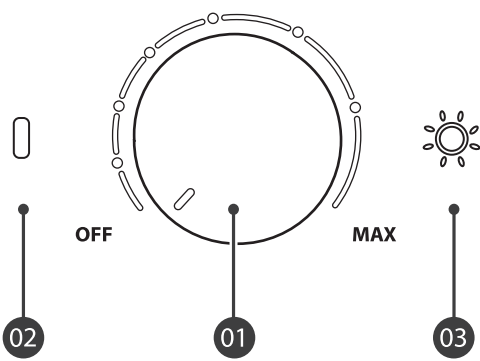
- In general, if the user touches the transducer/ ultrasonic membrane with your fingers, the natural oil and cosmetics in your skin can damage the surface, resulting in irregular mist output. In order to have the unit run properly after this occurs, you need to:
1. Wash the water tank and the base 2 ~ 3 times and then restart the unit. In case the unit is not washed, the unit will operate normally after running for 30 min ~ 1 hour on continuous mode.
 2. If the water is not enough, the mist may not be generated properly. (This may be a defect in the air hinge or water valve). There should be at least 30 mm of water in the base after removing the water tanks.

- Guide bracket silencer**
- It is best to wash off with clean running water.
 - Dry and refit.

- Deep cleaning (with vinegar)**
- Before and after storing the humidifier for a long period of time, dry the water in the Mist Output completely and wipe clean.
 - Clean the tank, reservoir, tank cap, and the transducer/ultrasonic membrane with a 10:1 mixture of water and white vinegar.
 - Fill the tank with diluted vinegar water to the maximum level.
 - Put about 400 mL of mixed water into the main body.
 - Fill the water tank and main body with water and leave for 30 to 60 minutes.
 - Pour mixed water and rinse with clean tap water 2 ~ 3 times.
 - Dry the parts in a well-shaded place.
 - Please reassemble the dried product.

4

CONTROL PANEL



- 01. Power & Mist Rotary Switch Button**
- Turn the control dial clockwise.
 - Power and mist level can be set by dialing the knob control, freely adjust the mist for quieter operation.
- 02. Empty Tank Alarm**
- If there is not enough water, the unit will stop and the red LED indicator will continue to blink at the same time.
- 03. Night Mood Light**
- Press the Night Mood Light button once to turn on the Night Mood Light. The light at the bottom of the water tank will turn on, illuminating the tank.
 - The brightness of the light can be switched OFF > Blue > Green > Amber > OFF.

2

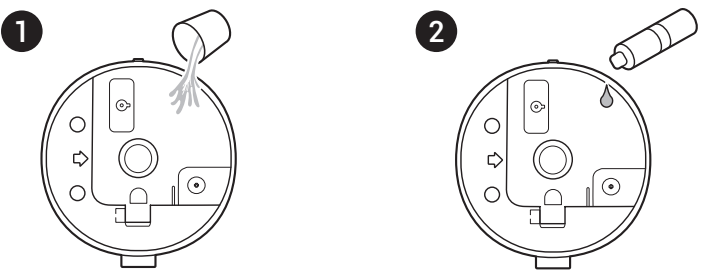
INITIAL OPERATION

- ⚠ CAUTION: Before filling the tank with water, turn the power off and unplug the unit from the outlet.
1. Position the unit on a flat and hard surface. Remove the upper cover and water tank from the base.
 2. Pour around room temperature water into the base.
 3. Add 6 - 7 drops of essential oil into the base as shown. You may increase the amount of essential oil to your liking.
 4. Place the water tank back on and fill it with room temperature water, not exceeding the MAX line. If you don't use essential oil, please ignore steps 2 - 4.
 5. Place the cover back on the water tank and make sure it is sitting well.
 6. Plug in and turn on the appliance. Always add the water into the unit before connecting to power.

5

ULTRASONIC WARM & COOL MIST HUMIDIFICATION

- Capacity**
- 0.6 Gallon - 2.2 Liters
- Max. 30 Hours Runtime**
- Based on the natural humidity level in your home, the temperature of water you use, and the mist-level setting you choose, you may experience longer or shorter runtimes.
- Adjustable Mist Level**
- Mist adjusts from the lowest output to highest output.
 - The corresponding mist level will be lit on the Mist Rotary Switch Button.
- Whisper-Quiet Operation**
- Noise level below 28 dB allows you to sleep easily in a comfortable and quiet environment.
- Night Mood Light**
- A useful light feature is included with the option of an independent Night Mood Light or touch button controls.
- Auto Shut Off Protection**
- When the tank is empty, the unit will shut off automatically.
- How do you add essential oils?**
1. Essential oil can only be added to the base.
 2. Always add around 100 ml water to the base before adding essential oil.



3

SAFETY & CAUTIONS

- This product is intended for household use only.
 - Never cover the unit while it is operating.
 - Always keep the cord away from high temperature and fire.
 - Perform regular maintenance on the ultrasonic membrane.
 - Never use detergent to clean the ultrasonic membrane.
 - Do not attempt to adjust or repair the unit. Servicing must be performed by a professional or qualified personnel.
 - Stop using the unit if there is an unusual noise or smell.
 - Unplug the unit when not in use for a long period of time.
 - Do not touch the water or any parts of the unit that are covered by water while the unit is on or plugged in.
 - Never operate without water in the tank.
 - Only use water in the tank.
 - Never use any additives in the water.
 - Keep this unit out of the reach of children. Do not allow children to use this unit without supervision.
 - Do not use outdoors. For indoor use only.
- WARNING**

Follow the instructions in this manual to reduce the risk of electric shock, short circuit, and/or fire.
- If the power cord is damaged, it must be replaced with a special cord. Reassembly is available from the manufacturer or its service agent.
 - This appliance is not intended for use by a person (including children) with reduced physical, sensory or mental capabilities, or lack of experience and knowledge about this unit, unless they have been given supervision or instruction concerning use of the appliance by a person responsible for their safety.
 - Children should be supervised to ensure that they do not play with the appliance.
 - This unit is not intended to be used to preserve documents or for art conservation.
- ⚠ Do not pull on the power cord when unplugging the unit.
 - ⚠ Do not tie or knot the power cord while unit is in operation.
 - ⚠ If the unit becomes submerged in water, unplug it and contact customer service.
 - ⚠ Do not unplug or move the unit while in operation.
 - ⚠ Do not plug additional appliances into the same outlet or power supply.
 - ⚠ Do not touch the plug with wet hands.
 - ⚠ Unplug the unit when not in operation for extended periods of time.
 - ⚠ Do not place around heating elements.
 - ⚠ Do not use around mist or fumes from industrial oil or around large quantities of metallic dust.
 - ⚠ The cord can become damaged by forcefully bending, pulling, twisting, bundling, pinching or placing heavy objects on it.
 - ⚠ Do not install in any sort of motor or transport vehicle (trucks, boats, ships, etc.).
 - ⚠ Do not place in an area with excessive amounts of noxious gases.
 - ⚠ Do not place near any flammable materials (aerosols, fuel, gases, etc.).
 - ⚠ Do not have the unit facing into wind or drafts.
 - ⚠ Do not place below any electrical outlet.
 - ⚠ Do not place in excessively humid areas where the unit may become wet.
 - ⚠ To reduce the risk of fire or electric shock, do not use this appliance with any solid-state speed control device.

6

IMPORTANT SAFETY INSTRUCTIONS

Thank you for purchasing a Winix Ultrasonic Humidifier. This product is for household use only. Please read all instructions carefully before operating.

- Do not repair or modify the unit. All repairs should be completed by a qualified technician.
- The plug for this unit is polarized with one blade wider than the other. Do not force the plug into an electrical outlet. Do not alter the plug in any way. If the plug does not fit into the outlet, reverse the plug. If it still does not fit, contact a qualified technician to install a proper outlet.
- Do not use if the power cord or plug is damaged or the connection to the wall outlet is loose.
- Use AC 120 V only.
- Do not damage, break, forcefully bend, pull, twist, bundle, coat, pinch, or place heavy objects on the power cord.
- Periodically remove dust from the power plug. This will reduce the risk of shock due to humidity build up.
- Remove the power plug from the outlet before cleaning the unit. When removing the power plug, grasp by holding the plug itself, never hold by the cord.
- If the power plug is damaged, it must be replaced by the manufacturer or a qualified technician.
- Remove the power plug from the outlet when not in use.
- Do not handle the power plug with wet hands.
- Do not operate the unit when using indoor smoke-generating insecticides.
- Do not clean unit with benzene or paint thinner. Do not spray insecticides on the unit.
- Do not use the unit where it is humid or where the unit may become wet, such as the bathroom.
- Do not insert fingers or foreign objects into air intake or outlet.
- Do not use the unit near flammable gases. Do not use near cigarettes, incense, or other spark-creating items.
- Unit will not remove carbon monoxide emitted from heating appliances or other sources.

UNIT SPECIFICATIONS

Model Name	L60 / L61
Power Voltage	AC 100 - 240 V / 50 - 60 Hz
Power Rate	18 W
Gallon Capacity	0.6 Gal / 2.2 L
Cool Moisture Output	Up to 200 mL/h
Runtime	Up to 30 hours
Product Dimensions	6.89 in (W) × 7.09 in (D) × 9.02 in (H)
Weight	1.76 lb / 0.8 kg

The exterior, design, and product specifications may be changed without prior notice to improve product performance.

Uses **WINIX** Genuine
Demineralization Capsules

Questions or Orders:
☎ (877)699-4649 ✉ info@winixinc.com
or visit: www.winixamerica.com

SKU: 1712-0111-00



FREQUENTLY ASKED QUESTIONS

Pressing the power button does not work

- Insert the power plug carefully.
- Check if there is water in the water tank. If not, please add water.

There is no steam coming out

- Is the water tank empty?
 - Please fill the tank with water more than halfway.
- Is the nozzle and cover well seated?
 - Please install the cover correctly.
- Please clean the ultrasonic module.

It has a strong odor

- Please make sure the inside of the humidifier body and the water tank is not contaminated.
 - Clean the inside of the main body and the water tank.

- Did you leave the water in the water tank and humidity reservoir unattended?
 - Change the water in the water tank with new tap water. Also, dispose the remaining water from the main body and the water tank.

The Empty Tank Alarm isn't turning off

- Is this happening right after setting up the water tank?
 - After a few moments, the water in the water tank fills the reservoir and Empty Tank Alarm turns off.
- Is it tilted?
 - Drain the water inside the humidifier and place it on a flat, stable surface.

PRODUCT WARRANTY

The terms of the warranty are as follows:

1. This product is manufactured under stringent quality control and inspections.
2. The warranty will be voided if product failure is a result of negligence or misuse by the consumer. Shipping and service fees may be incurred even during the warranty period.
3. A proof of purchase must be presented upon claiming a Product Warranty.
4. Store the proof of purchase in a safe place or register your product on winixamerica.com to upload your proof of purchase.
5. This warranty is valid only in the USA and Canada.
* for more information visit <https://winixamerica.com/terms-and-conditions/>

Model Name		L60 / L61
Warranty Period		One (1) Year
Place of Purchase		
Place of Purchase tel.		
Customer	Address	
	Name	
	Tel.	

FCC STATEMENTS

Warning: Changes or modifications to this unit not expressly approved by the party responsible for compliance could void the user's authority to operate the equipment.

Note: This equipment has been tested and found to comply with the limits for a Class B digital device, pursuant to Part 18 of the FCC Rules. These limits are designed to provide reasonable protection against harmful interference in a residential installation. This equipment generates, uses, and can radiate radio frequency energy and, if not installed and used in accordance with the instructions, may cause harmful interference to radio communications. However, there is no guarantee that interference will not occur in a particular installation. If this equipment does cause harmful interference to radio or television reception, which can be determined by turning the equipment off and on, the user is encouraged to try to correct the interference by one or more of the following measures:

- Reorient or relocate the receiving antenna.
- Increase the separation between the equipment and receiver.
- Connect the equipment to an outlet on a circuit different from that to which the receiver is connected.
- Consult the dealer or an experienced radio / TV technician for help.

This device contains license-exempt transmitter(s) / receiver(s) that comply with Innovation, Science and Economic Development Canada's license-exempt RSS(s). Operation is subject to the following two conditions:

- This device may not cause interference.
- This device must accept any interference, including interference that may cause undesired operation of the device.

Cet appareil contient des émetteurs/récepteurs exemptés de licence et conformes aux normes Innovation, Science et Economic. RSS(s) sans licence de Développement Canada. Le fonctionnement est soumis aux deux conditions suivantes:

- cet appareil ne doit pas causer d'interférences nuisibles, et
- cet appareil doit accepter toute interférence reçue, y compris les interférences pouvant provoquer un fonctionnement non souhaité.

WINIX

Ultrasonic Humidifier



Model Name: L60 / L61

Use & Care Guide:

- The product warranty is printed on the back of this guide.
- This product is manufactured for use only in USA / CA.
- This product is suitable for 120 V only.



WINIX

Contact Winix for product related inquiries and customer service

To expedite service, please specify the model name and number, the nature of the problem, your contact information, and your address.

- Dedicated Call Center: ☎ (877) 699-4649
- Website: www.winixamerica.com